

**VENUS**  
**VALVES INDUSTRIES**

*A Sign of High Quality*

[www.venusvalvesind.com](http://www.venusvalvesind.com)

**ISO 9001:2008**

STORE



FORGING



CNC



SPM



PLATTING



ASSEMBLY



Index



**VENUS**  
VALVES INDUSTRIES

01	ABOUT COMPANY .....	P. 02-03
02	ART NO.90 BALL VALVE .....	P. 04-07
03	ART NO.200 BALL VALVE .....	P. 08-11
04	ART NO.85 HOSE BIB COCK .....	P. 12-13
05	ART NO.80 GATE VALVE .....	P. 14-15
06	ART NO.50 CHECK VALVE .....	P. 16- 17
07	ART NO.60 SWING CHECK VALVE .....	P. 18-19
08	ART NO.55 & 70 FOOT VALVE .....	P. 20-21
09	ART NO.40 Y- STRAINER .....	P. 22-23
10	ART NO.128 &130 DRAIN COCK & STOP COCK	P. 24-25
11	ANGLE VALVE .....	P. 26-27
12	WATER HEATER SAFETY VALVE .....	P. 28-29
13	CP FITTINGS .....	P - 30-31
14	TESTING FACILITIES .....	P - 32
15	NOTES .....	P - 33



## ABOUT COMPANY

Venus Valves Industries is Located at Jamnagr, Gujarat, India. We have Long Experience in Industrial and sanitary fittings Valves, Now we are manufacturing different type of brass and bronze Valves and fitting in India under the brand name “ **VENUS** ”.

We are an ISO 9001:2008 certified valves Industries and leading manufacturer and exporter products like Ball Valve, Gate Valve ,Check Valve, Foot Valve , Floating Valve , CP Fittings & etc.

Our Unit is managed by a team of qualified personnel with extensive experience in the field. We have made rapid strides in technology and statute and are today recognized by our esteemed customers as the most reliable single point source for their versatile requirement of Valves. Their sustained support bears ample testimony for the confidence reposed in us.



### Quality Policy

Our quality control system and its data's are regularly audited by our Management & External Auditors We can make the products as per different International standards and specification.



### Our Mission

Our Mission integrated solutions and technologies for water, gas and oil supply system to global customers.



### Our Vision

Our Vision is to Increase the Production Capacity and gradually be the Flagship Supplier with Best Quality and Management System Implementation.

### Certificate





**VENUS**



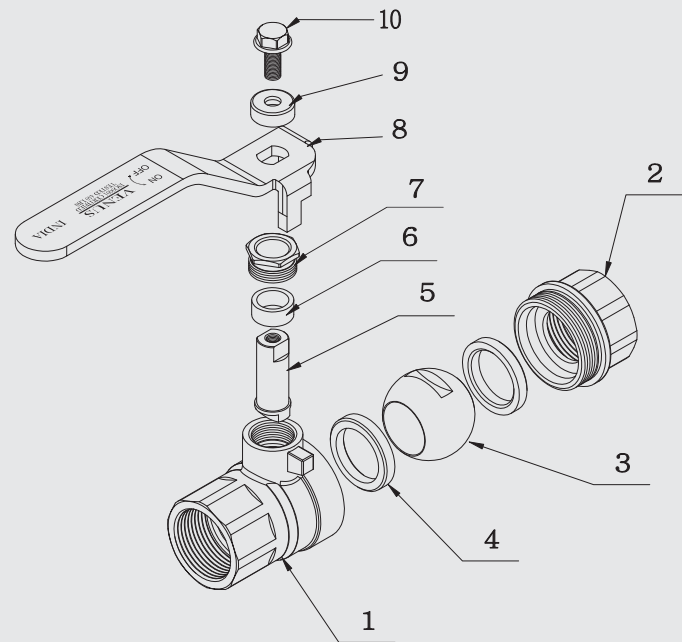
## 1 THREADED END BALL VALVES

Make sure all surfaces are clear and free of debris on the piping Connection.

Use Teflon tape or approved sealant is recommended.

Prepare two smooth-jawed adjustable wrenches when installing the valve.  
A loosely fitting pipe wrench can distort the valve and Causes a leak.

Apply one wrench on the hex nearest the joint being tightened to prevent breaking the seal between the end cap and body of the valve.



## 2 SOLDERED END BALL VALVES

Clean and flux before installing.

Cut tubing in a proper dimension square, de-burred, and clean with a solvent.

Turn the valve in the fully open position.

Wrap a wet rag around valve body.

Use soft solder, a low temperature solder (420 F/216 C). Higher temperature solders may damage the seat material.

Apply heat with the flame directed away from the center of the valve body. Excessive heat can harm the seats (end cap-to-body seal and Teflon seats).

Check the packing gland after soldering. It may have to be tightened in 1/8 to 1/4 turn increments until leak stops.

## 3 OPERATION

To open or close the valve, turn the handle 1/4 turn (90 degrees)

In open position - the handle rotation is counterclockwise and the handle is parallel with the valve.

In close position - the handle rotation is clockwise and the handle is perpendicular with the valve.

## 4 NOTE

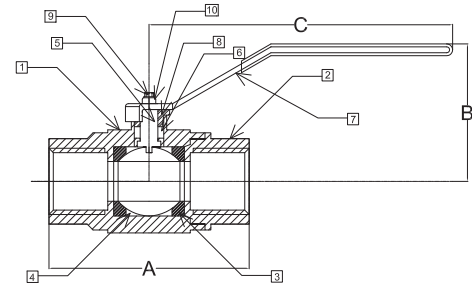
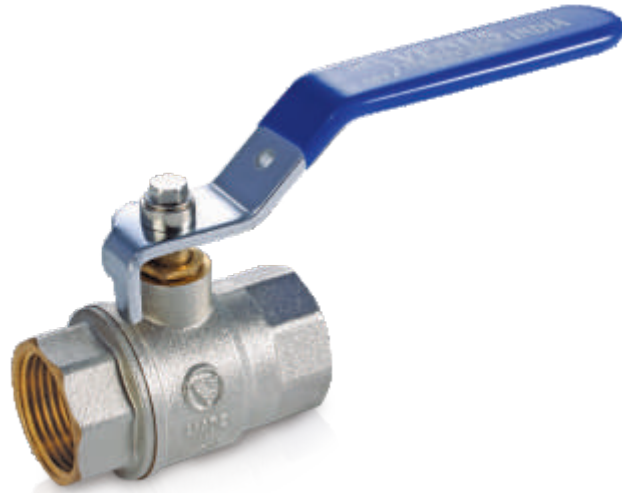
Always test valve and system before putting the system into Service

Design and any specifications are subject to change without prior notice.

CAUTION : Do not disassemble valve while under pressure nor with entrapped hazardous fluids therein.



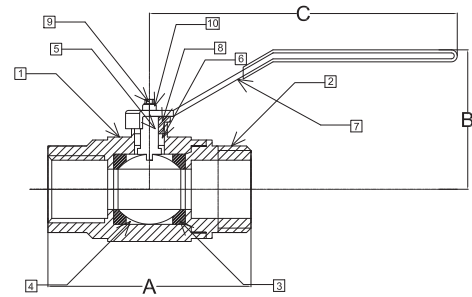
## 90 BRASS BALL VALVE F.F.



NO	PART	MATERIAL
1	BODY	FORGED BRASS
2	CAP	FORGED BRASS
3	BALL SEAT	PTFE
4	BALL	BRASS
5	STEM	BRASS
6	STEM SEAT	PTFE
7	HANDLE	MILD STEEL
8	NUT	BRASS
9	SCREW	MILD STEEL
10	CUP WASHER	MILD STEEL

SIZE	1/2"	3/4"	1"	1.1/4"	1.1/2"	2"	2.1/2"	3"	4"
A	49	58	67	74	87	105	145	162	193
B	48.5	55.5	68	72.5	89.5	95.5	112	145	156
C	90	111.5	111	123.5	141	158.5	220	265	265

## 95 BRASS BALL VALVE M.F.

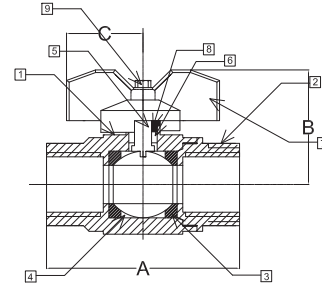


NO	PART	MATERIAL
1	BODY	FORGED BRASS
2	CAP	FORGED BRASS
3	BALL SEAT	PTFE
4	BALL	BRASS
5	STEM	BRASS
6	STEM SEAT	PTFE
7	HANDLE	MILD STEEL
8	NUT	BRASS
9	SCREW	MILD STEEL
10	CUP WASHER	MILD STEEL

SIZE	1/2"	3/4"	1"	1.1/4"	1.1/2"	2"
A	61	75	83	94	105	120
B	43.5	55.5	65.5	77	89	97
C	90	111	110	135	160	160



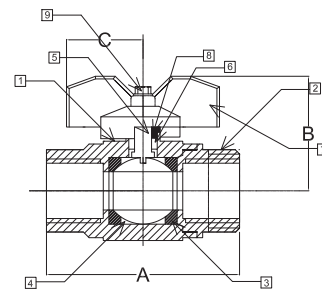
**92 BRASS BALL VALVE F.F.**



NO	PART	MATERIAL
1	BODY	FORGED BRASS
2	CAP	FORGED BRASS
3	BALL SEAT	PTFE
4	BALL	BRASS
5	STEM	BRASS
6	STEM SEAT	PTFE
7	HANDLE	ALUMINIUM
8	NUT	BRASS
9	SCREW	MILD STEEL

SIZE	1/2"	3/4"
A	49	58
B	38	44.5
C	27	31

**97 BRASS BALL VALVE M.F.**



NO	PART	MATERIAL
1	BODY	FORGED BRASS
2	CAP	FORGED BRASS
3	BALL SEAT	PTFE
4	BALL	BRASS
5	STEM	BRASS
6	STEM SEAT	PTFE
7	HANDLE	ALUMINIUM
8	NUT	BRASS
9	SCREW	MILD STEEL

SIZE	1/2"	3/4"
A	54	62.5
B	40	46.5
C	27	31



**VENUS**



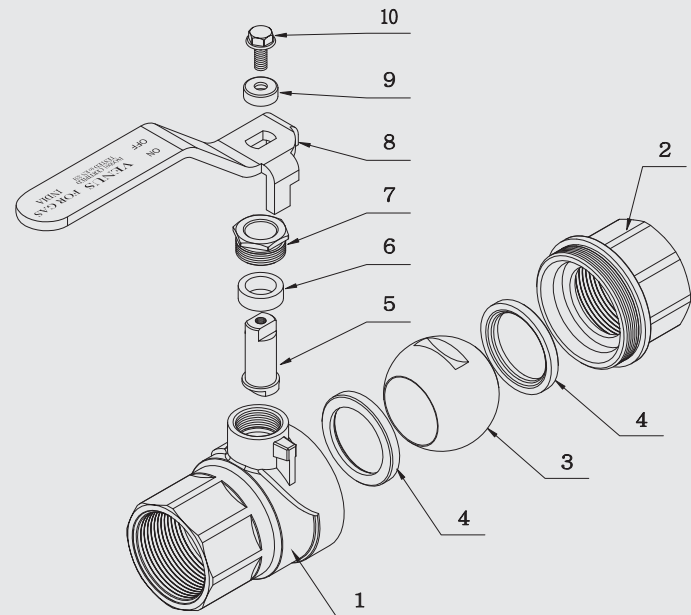
## 1 THREADED END BALL VALVES

Make sure all surfaces are clear and free of debris on the piping Connection.

Use Teflon tape or approved sealant is recommended.

Prepare two smooth-jawed adjustable wrenches when installing the valve.  
A loosely fitting pipe wrench can distort the valve and Causes a leak.

Apply one wrench on the hex nearest the joint being tightened to prevent breaking the seal between the end cap and body of the valve.



## 2 SOLDERED END BALL VALVES

Clean and flux before installing.

Cut tubing in a proper dimension square, de-burred, and clean with a solvent.

Turn the valve in the fully open position.

Wrap a wet rag around valve body.

Use soft solder, a low temperature solder (420 F/216 C). Higher temperature solders may damage the seat material.

Apply heat with the flame directed away from the center of the valve body. Excessive heat can harm the seats (end cap-to-body seal and Teflon seats).

Check the packing gland after soldering. It may have to be tightened in 1/8 to 1/4 turn increments until leak stops.

## 3 OPERATION

To open or close the valve, turn the handle 1/4 turn (90 degrees)

In open position - the handle rotation is counterclockwise and the handle is parallel with the valve.

In close position - the handle rotation is clockwise and the handle is perpendicular with the valve.

## 4 NOTE

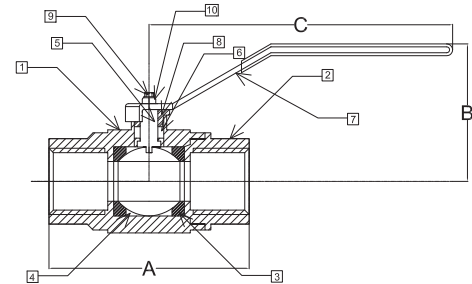
Always test valve and system before putting the system into Service

Design and any specifications are subject to change without prior notice.

CAUTION : Do not disassemble valve while under pressure nor with entrapped hazardous fluids therein.



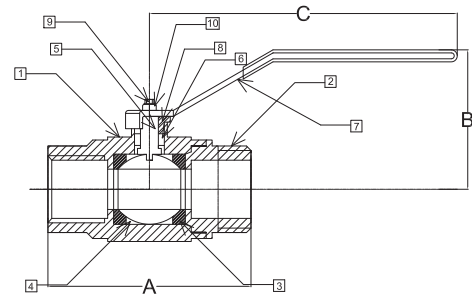
## 200 BRASS BALL VALVE F.F.



NO	PART	MATERIAL
1	BODY	FORGED BRASS
2	CAP	FORGED BRASS
3	BALL SEAT	PTFE
4	BALL	BRASS
5	STEM	BRASS
6	STEM SEAT	PTFE
7	HANDLE	MILD STEEL
8	NUT	BRASS
9	SCREW	MILD STEEL
10	CUP WASHER	MILD STEEL

SIZE	1/2"	3/4"	1"	1.1/4"	1.1/2"	2"
A	55.5	70	81	94	107	126
B	43.6	55.5	66	73	79.5	96.5
C	90	111.5	111	123.5	141	158.5

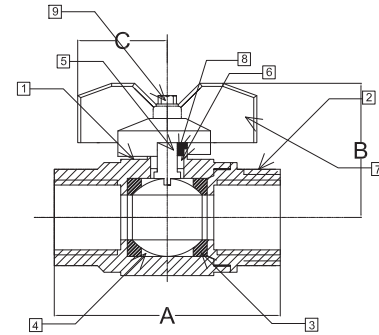
## 205 BRASS BALL VALVE M.F.



NO	PART	MATERIAL
1	BODY	FORGED BRASS
2	CAP	FORGED BRASS
3	BALL SEAT	PTFE
4	BALL	BRASS
5	STEM	BRASS
6	STEM SEAT	PTFE
7	HANDLE	MILD STEEL
8	NUT	BRASS
9	SCREW	MILD STEEL
10	CUP WASHER	MILD STEEL

SIZE	1/2"	3/4"	1"	1.1/4"	1.1/2"	2"
A	61	75	89.5	99.5	109	126
B	43.5	55.5	65	77	88	99
C	90	111	112	120	135	160

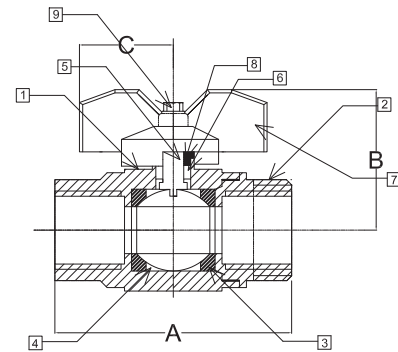
**202 BRASS BALL VALVE F.F.**



NO	PART	MATERIAL
1	BODY	FORGED BRASS
2	CAP	FORGED BRASS
3	BALL SEAT	PTFE
4	BALL	BRASS
5	STEM	BRASS
6	STEM SEAT	PTFE
7	HANDLE	ALUMINIUM
8	NUT	BRASS
9	SCREW	MILD STEEL

SIZE	1/2"	3/4"
A	55.5	70
B	44	51
C	30	36

**207 BRASS BALL VALVE M.F.**



NO	PART	MATERIAL
1	BODY	FORGED BRASS
2	CAP	FORGED BRASS
3	BALL SEAT	PTFE
4	BALL	BRASS
5	STEM	BRASS
6	STEM SEAT	PTFE
7	HANDLE	ALUMINIUM
8	NUT	BRASS
9	SCREW	MILD STEEL

SIZE	1/2"	3/4"
A	60.5	75
B	45	50
C	30	36



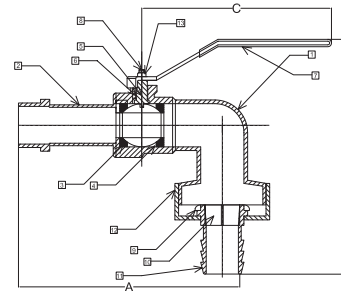
**VENUS**



85 HOSE BIB COCK



SIZE	1/2"	3/4"	1"
A	90	110	181
B	91.5	107	131
C	90	107	120

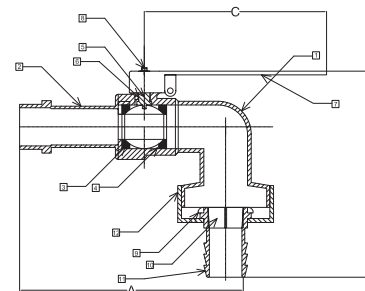


NO	PART	MATERIAL
1	BODY	FORGED BRASS
2	SPINDLE	FORGED BRASS
3	BALL SEAT	PTFE
4	BALL	BRASS
5	STEM	BRASS
6	STEM SEAT	NBR
7	HANDLE	MILD STEEL
8	SCREW	MILD STEEL
9	O RING	NBR
10	WASHER	ABS
11	NOZZLE	BRASS
12	FLOWER CAP	FORGED BRASS
13	CUP WASHER	MILD STEEL

85L LOCKING HOSE BIB COCK



SIZE	1/2"	3/4"	1"
A	90	110	181
B	82	93.5	131
C	78.5	78.5	120



NO	PART	MATERIAL
1	BODY	FORGED BRASS
2	SPINDLE	FORGED BRASS
3	BALL SEAT	PTFE
4	BALL	BRASS
5	STEM	BRASS
6	STEM SEAT	NBR
7	HANDLE	ALUMINIUM
8	SCREW	MILD STEEL
9	O RING	NBR
10	WASHER	ABS
11	NOZZLE	BRASS
12	FLOWER CAP	FORGED BRASS

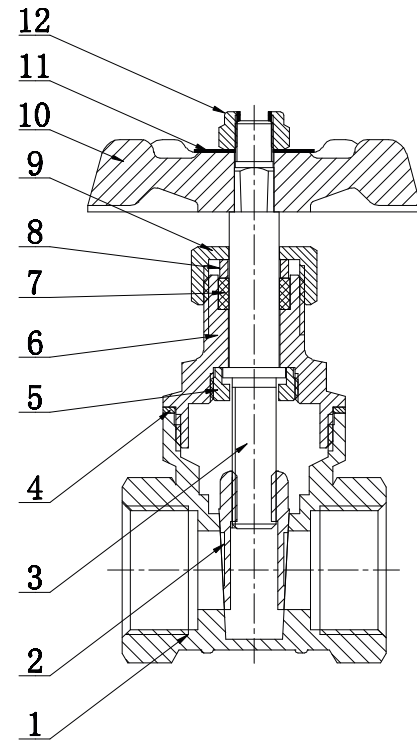


**VENUS**





80 BRASS GATE VALVE



NO	PART	MATERIAL
1	BODY	FORGED BRASS
2	GATE	FORGED BRASS
3	STEM	BRASS
4	GASKET	ASBESTOS
5	LOCKING NUT	BRASS
6	UPPER BODY	BRASS
7	STEM SEAT	PTFE
8	RING	BRASS
9	NUT	BRASS
10	WHEEL	MILD STEEL
11	NAME PLATE	ALUMINIUM
12	NUT	MILD STEEL

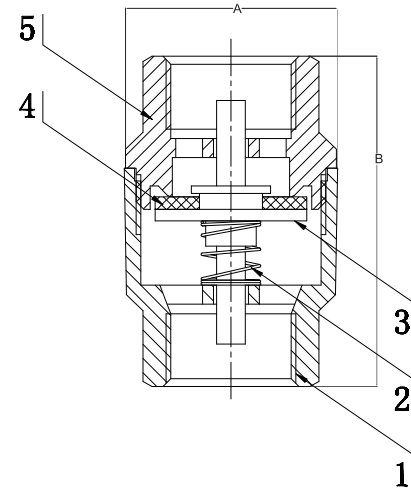
SIZE	1/2"	3/4"	1"	1.1/4"	1.1/2"	2"	2.1/2"	3"	4"
A	42	47	53	59	64	72	87	97	110
B	72	85	96	110	118.5	136.5	172	199	232
C	46	51	51	65	70	77	100	110	130



**VENUS**



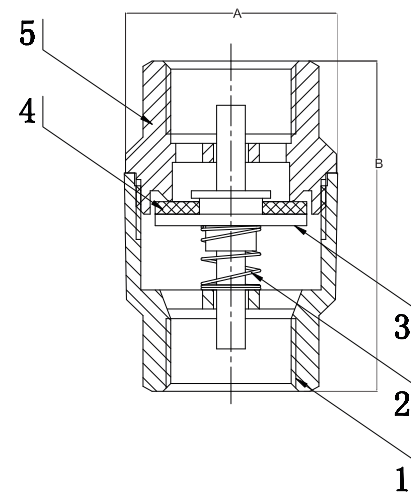
**50 BRASS CHECK VALVE**



NO	PART	MATERIAL
1	BODY	BRASS
2	SPRING	S.S 304
3	BOARD	BRASS
4	WASHER	NBR
5	CAP	BRASS

SIZE	1/2"	3/4"	1"	1.1/4"	1.1/2"	2"	2.1/2"	3"	4"
A	51.5	58.5	66.5	77	89.5	102	119	130	146
B	33.5	42.5	48	60	68.5	81	110	121	139

**50B BRASS CHECK VALVE**



NO	PART	MATERIAL
1	BODY	BRASS
2	SPRING	S.S 304
3	BOARD	BRASS
4	WASHER	NBR
5	CAP	BRASS

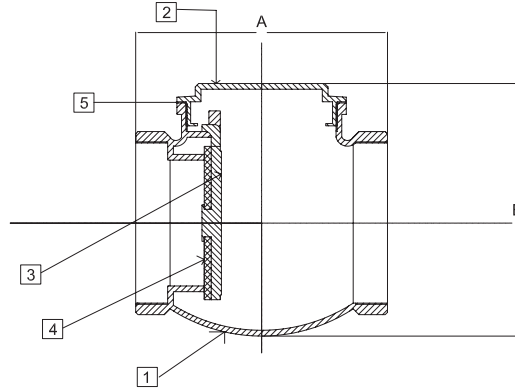
SIZE	1/2"	3/4"	1"	1.1/4"	1.1/2"	2"	2.1/2"	3"	4"
A	51.5	58.5	66.5	77	89.5	102	119	130	146
B	33.5	42.5	48	60	68.5	81	110	121	139



**VENUS**



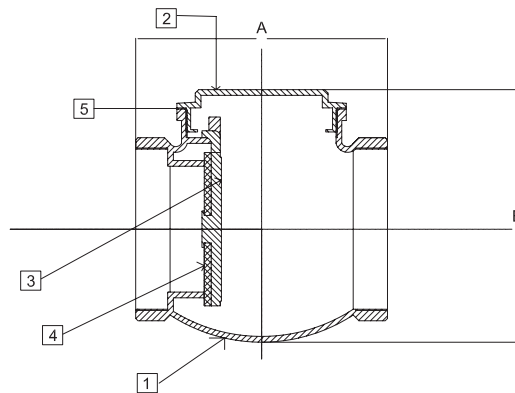
## 60 SWING CHECK VALVE N. P.



NO	PART	MATERIAL
1	BODY	BRASS
2	CAP	BRASS
3	DISK	BRASS
4	WASHER	NBR
5	GASKET	ASBESTOS

SIZE	1/2"	3/4"	1"	1.1/4"	1.1/2"	2"	2.1/2"	3"	4"
A	46	56	66	75	85	104	120	138	175
B	45	55	64.5	73	82.5	102	123	140	183

## 60B SWING CHECK VALVE B. P.



NO	PART	MATERIAL
1	BODY	BRASS
2	CAP	BRASS
3	DISK	BRASS
4	WASHER	NBR
5	GASKET	ASBESTOS

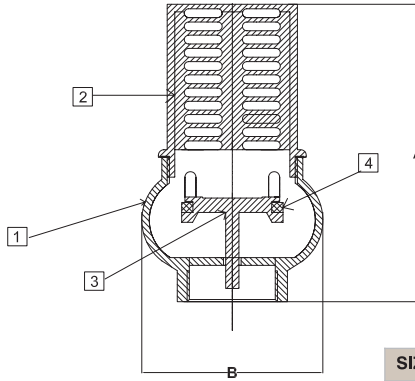
SIZE	1/2"	3/4"	1"	1.1/4"	1.1/2"	2"	2.1/2"	3"	4"
A	46	56	66	75	85	104	120	138	175
B	45	55	64.5	73	82.5	102	123	140	183



**VENUS**



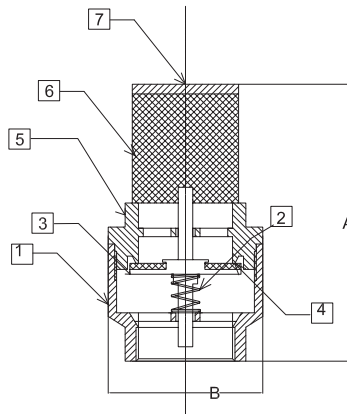
**70 BRASS FOOT VALVE**



NO	PART	MATERIAL
1	BODY	BRASS
2	NET	BRASS
3	BOARD	BRASS
4	WASHER	NBR

SIZE	1/2"	3/4"	1"	1.1/4"	1.1/2"	2"	2.1/2"	3"	4"
A	58	67	76	93	103	119	133	150	171
B	38	41	50	60	68	79.5	102	116	145

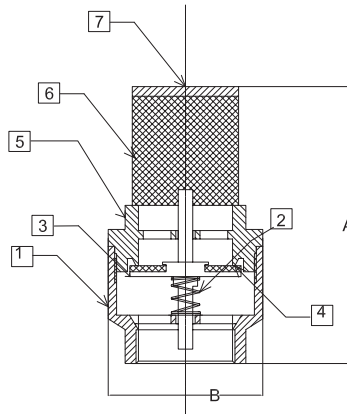
**55 NET FOOT VALVE**



NO	PART	MATERIAL
1	BODY	BRASS
2	SPRING	S.S 304
3	BOARD	BRASS
4	WASHER	NBR
5	CAP	ABS
6	NET	S.S 304
7	CAP	S.S 304

SIZE	1/2"	3/4"	1"	1.1/4"	1.1/2"	2"
A	63.5	74.5	95.5	111	125.5	147.5
B	34	42	48	60	68	81

**55B NET FOOT VALVE**



NO	PART	MATERIAL
1	BODY	BRASS
2	SPRING	S.S 304
3	BOARD	BRASS
4	WASHER	NBR
5	CAP	ABS
6	NET	S.S 304
7	CAP	S.S 304

SIZE	1/2"	3/4"	1"	1.1/4"	1.1/2"	2"
A	63.5	74.5	95.5	111	125.5	147.5
B	34	42	48	60	68	81

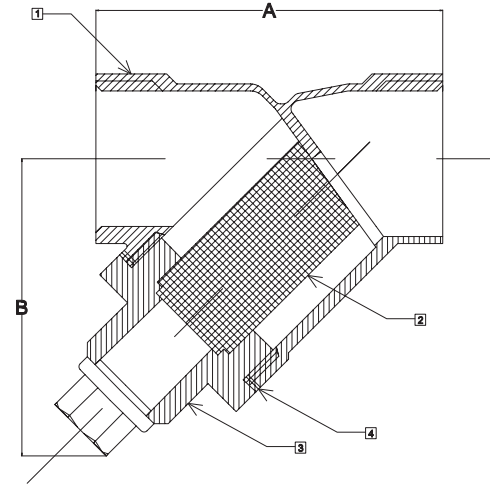


**VENUS**





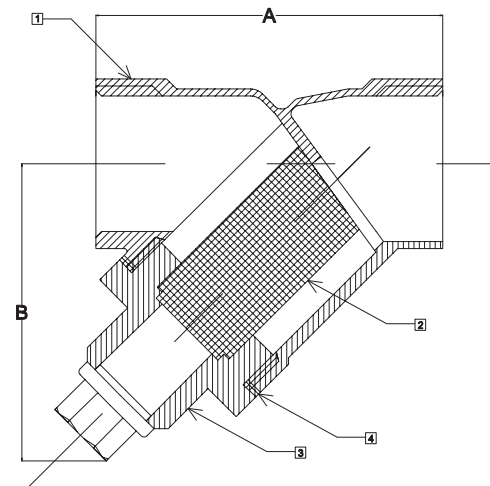
**40 BRASS Y-STRAINER N. P.**



NO	PART	MATERIAL
1	BODY	BRASS
2	NET	S.S 304
3	CAP	BRASS
4	GASKET	ASBESTOS

SIZE	1/2"	3/4"	1"	1.1/4"	1.1/2"	2"	2.1/2"	3"	4"
A	52	61.5	73	86	102	124	144	168	204
B	38.5	47	60	66	78.5	95	120	137	154

**40B BRASS Y-STRAINER B. P.**



NO	PART	MATERIAL
1	BODY	BRASS
2	NET	S.S 304
3	CAP	BRASS
4	GASKET	ASBESTOS

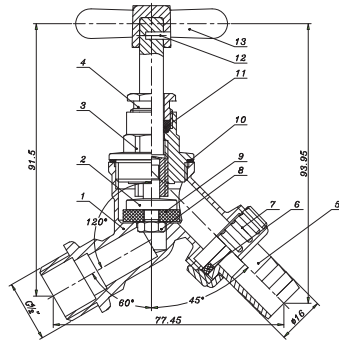
SIZE	1/2"	3/4"	1"	1.1/4"	1.1/2"	2"	2.1/2"	3"	4"
A	52	61.5	73	86	102	124	144	168	204
B	38.5	47	60	66	78.5	95	120	137	154



**VENUS**



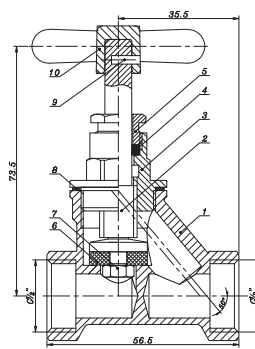
## DC. 130 DRAIN COCK



SIZE	1/2"	3/4"
A	84	98.5
B	105	129

NO	PART	MATERIAL
1	BODY	FORGED BRASS
2	STEM	BRASS
3	CAP	FORGED BRASS
4	NUT	BRASS
5	NOZZLE	BRASS
6	WASHER	NBR
7	FLOWER CAP	FORGED BRASS
8	SPINDLE	BRASS
9	WASHER	NBR
10	GASKET	ASBESTOS
11	STEM SEAT	NBR
12	PIN	BRASS
13	HANDLE	FORGED BRASS

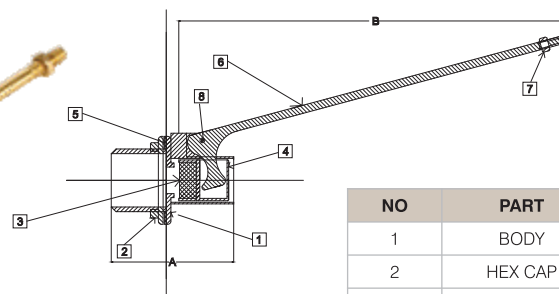
## SC. 128 STOP COCK



SIZE	1/2"	3/4"	1"
A	55.5	76.5	102.5
B	92	120	140

NO	PART	MATERIAL
1	BODY	FORGED BRASS
2	STEM	BRASS
3	CAP	FORGED BRASS
4	STEM SEAT	NBR
5	NUT	BRASS
6	WASHER	NBR
7	SPINDLE	BRASS
8	GASKET	ASBESTOS
9	PIN	BRASS
10	HANDLE	FORGED BRASS

## 16 FLOATING VALVE



SIZE	1/2"	3/4"
A	68.5	85
B	320	370.5

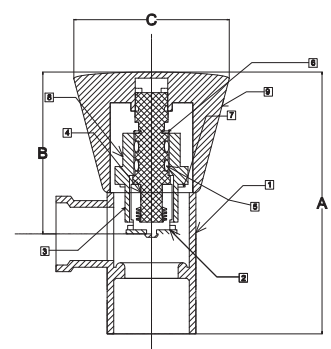
NO	PART	MATERIAL
1	BODY	FORGED BRASS
2	HEX CAP	FORGED BRASS
3	WASHER	NBR
4	SPINDLE	FORGED BRASS
5	WASHER	NBR
6	ROD	BRASS
7	HEX NUT	BRASS
8	LOCK PIN	BRASS



**VENUS**



## DIAMOND BRASS ANGLE VALVE

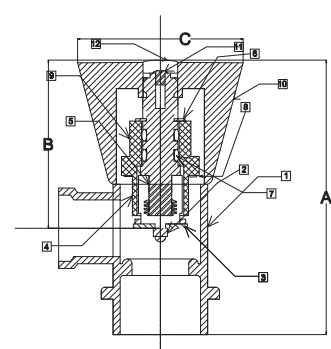


NO	PART	MATERIAL
1	BODY	BRASS
2	WASHER	NBR
3	BUSH	BRASS
4	STEM	BRASS
5	STEM "O" RING	NBR
6	LOCK	BRASS
7	"O" RING	NBR
8	NUT BODY	BRASS
9	KNOB	ZINC

SIZE	1/2"	3/4"
A	92	70.1
B	38	36.1
C	42	54.5
D	43	108.5

## GOLD BRASS ANGLE VALVE

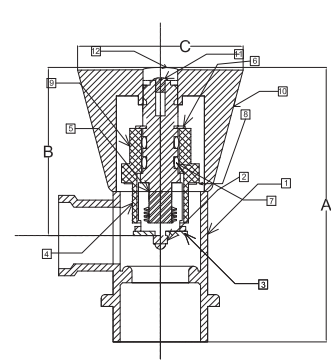


NO	PART	MATERIAL
1	BODY	BRASS
2	DUM NUT	BRASS
3	WASHER	NBR
4	BUSH	BRASS
5	STEM	BRASS
6	LOCK	BRASS
7	STEM "O" RING	NBR
8	"O" RING	NBR
9	NUT BODY	BRASS
10	KNOB	ZINC
11	SCREW	MILD STEEL
12	CAP	ABS

SIZE	1/2"	3/4"
A	78	75
B	35	36.1
C	31.5	54.5
D	40.5	108.5

## SILVER ZINC ANGLE VALVE



NO	PART	MATERIAL
1	BODY	ZINC
2	DUM NUT	BRASS
3	WASHER	NBR
4	BUS	BRASS
5	STEM	BRASS
6	LOCK	BRASS
7	STEM "O" RING	NBR
8	"O" RING	NBR
9	NUT BODY	BRASS
10	KNOB	ZINC
11	SCREW	MILD STEEL
12	CAP	ABS

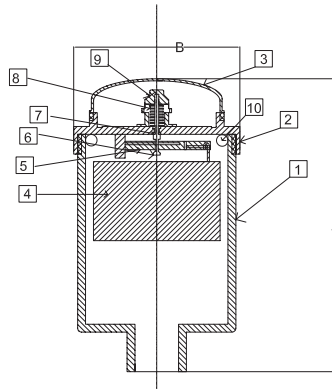
SIZE	1/2"	3/4"
A	78	70.1
B	34	36.1
C	33	54.5
D	40.5	108.5



**VENUS**



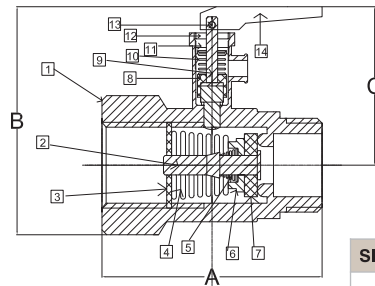
**18 AUTO AIR VENT VALVE**



NO	PART	MATERIAL
1	BODY	BRASS
2	CAP	BRASS
3	UPPER CAP	ABS
4	FLOAT	PROPYLENE RESIN
5	STEM	PROPYLENE RESIN
6	STEM	BRASS
7	"O" RING	NBR
8	SPRING	S.S 304
9	NUT	BRASS
10	WASHER	NBR

SIZE	1/2"
A	112
B	46.5

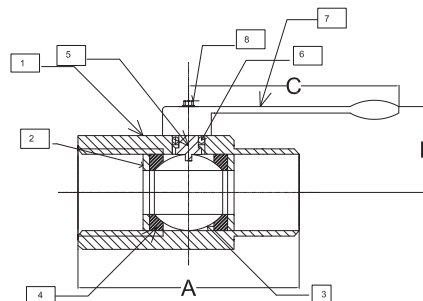
**15 WATER HEATER SAFETY VALVE**



SIZE	1/2"
A	40.2
B	57
C	42

NO	PART	MATERIAL
1	BODY	BRASS
2	STEM	BRASS
3	CONTROL SCREW WHEEL	ABS
4	SPRING	S.S 304
5	SPRING	S.S 304
6	SPRING BASE	ABS
7	WASHER	ABS
8	SPRING BASE	ABS
9	STEM	ABS
10	SPRING	S.S 304
11	CONTROL SCREW WHEEL	ABS
12	CAP	S.S 304
13	LOCK PIN	BRASS
14	HANDLE	ABS

**99 MINI VALVE**



NO	PART	MATERIAL
1	BODY	BRASS
2	NUT	BRASS
3	BALL	BRASS
4	BALL SEAT	PTFE
5	STEM	BRASS
6	STEM SEAT	PTFE
7	HANDLE	ABS
8	SCREW	MILD STEEL

SIZE	1/2"
A	44
B	30.4
C	69.5



**VENUS**



01

BRASS 3 PCS CONNECTOR



02

BRASS HEX NIPPLE



03

BRASS ELBOW M/F



04

BRASS R/NIPPLE SOCKET





05

BRASS ELBOW



06

BRASS PLUG



07

BRASS NIPPLE SOCKET



08

BRASS NUT FOR FOU CET



09

BRASS SOCKET



10

BRASS REDUCING BUSH



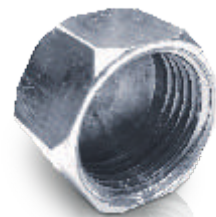
11

BRASS REDUCING HEX NIPPLE



12

BRASS CAP



13

BRASS TEE



14

BRASS LONG NIPPLE



15

BRASS INSERT FOR FOU CET



16

BRASS TANK CONNECTOR

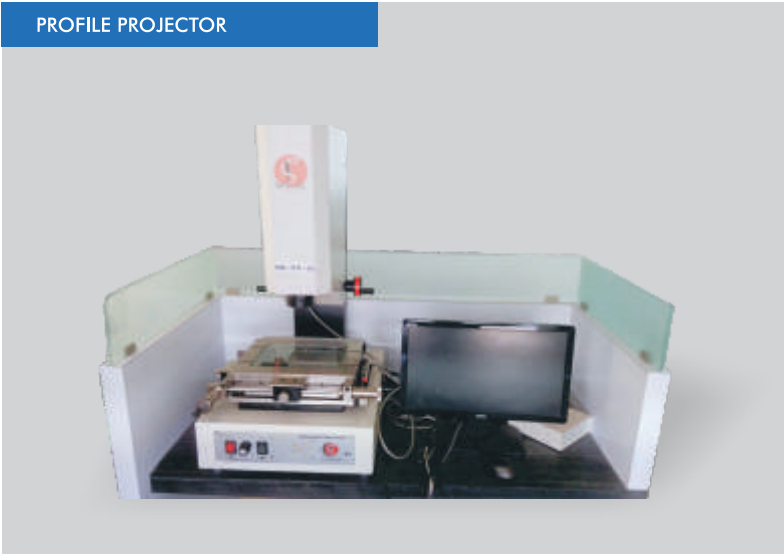


Note : All CP FITTING Products are also available in Brass finish



## TESTING FACILITIES

PROFILE PROJECTOR



PRESSURE TESTING MACHINE



AIR TESTING MACHINE



LIFE TESTING MACHINE







**VENUS**

**Venus Valves Industries**

Plot No. 4258, GIDC, Phase III, Road No.E, Dared, Jamnagar - 362 005 (GUJARAT) INDIA  
Phone : +91- 288- 273 10 58, +91-288- 273 11 58 website : [www.venusvalvesind.com](http://www.venusvalvesind.com)

