

HiFIX™

PIPING SUPPORT EXPERT



INTRODUCTION

Cixi City Zhongyi Appliance Industry Co.,Ltd established in 1995, which now located at Xianjiang Industry Zone, Changhe town, Cixi city, Ningbo, China.

In 2000, we began to manufacture fixing system for construction industry with brand Bestfix, specifically classified by Pipe Clamps, Channels and brackets. We perform smooth in-house flow from Forming, Bending, Welding, Threading and Galvanizing for assembling and Packing procedure.

The factory also equipped with quality control lab, molding depth and run in ERP system. Our products can be widely used in the building construction and decoration, cable & pipe system for telecommunication and channels construction etc..

Till 2015, we have the TUV Certificate, SGS Certificate, ISO9001:2008 and other local & international certificates.

The factory has a 30,000sqm area, and presently having 200 employees, including 15 engineers.. In 2014, we produced about 75 million pcs clamps. We export the 90% of our goods. We carry out 40% of our export to Western Europe and 60% to Middle East Countries, Russia and Turkey. Our turnover in 2014 was about \$13 million.

We are the OEM supplier for many transnational corporations in the domestic market. such as "Hilti", "Wurth", "Walraven", "Inka" etc. Most of these brands, pipe clamp projects are provided by us.

Now we launch our new brand in middle east with the name of "HIFIX".

Hifix, combining the advantage of competitive price with high quality goods, in-time delivery and wide products range.



TECHNICAL SPECIFICATION:

Materials

- Clamp Body: Cold-Rolled Carbon Steel Grade Dc01 according to EN 10 130 : 2006
- Clamp Rubber Features:
 - Materials: EPDM
 - Noise Reduction up to 18 DB(A) as per DIN 4109
 - Fire Behavior: DIN 4102 Class B
 - Hardness: 40 Shore
 - Temperature Range: -40⁰ C to 110⁰ C
- Clamp Plating: Electro galvanized zinc-plating as per the standard ASTM-B633
- Clamp Nut: Welded on projection welding machine

- Nut Load:

Nut Type	NUT Size	Size Range	PULL-OFF TEST (KN)	PULL-OFF TEST(KG)
Hex Nut	M8	3/8" to 2"	9	55
Hex Nut	M10	2 1/4" to 8"	14	70
Combi Nut	M8 + M10	3/8" to 8"	9	55
Combi Nut	M8 + M10	2 1/4" to 8"	14	70

* Note: Clamp with Hex Nut will be manufactured as per order

- Nut Welding Strength:

Clamp Thickness (mm)	Size Range	Welding Strength (NM)
1.0 mm	3/8" to 1"	55
1.2 mm	1 1/4" to 2"	65
1.5 mm	2 1/4" to 4"	75
2.0 mm	4 1/2" to 8"	

- Clamp Screws: M5 and M6 philip combi head with washer

Standards:

- Clamps are manufactured according to the following standard:
 - EN 10130 & BS 1449 : Cold rolled carbon steel standard
 - BS 3974 part 1, 2, 3 & 4 : Clamps specification (material used, temperature used diminutions, load & application)
 - DIN 4109 : Rubber noise reduction standard
 - DIN 4102 Class B : Rubber fire behavior standard
 - ASTM-B633 : Electro galvanized zink plating standard

Standard Pipe Clamp

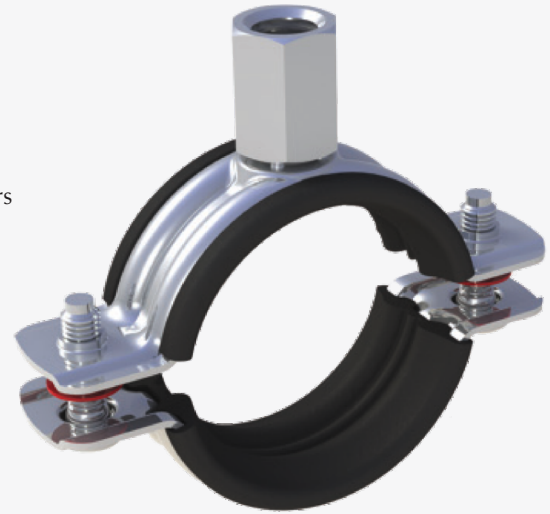
With Rubber Profile

Application:

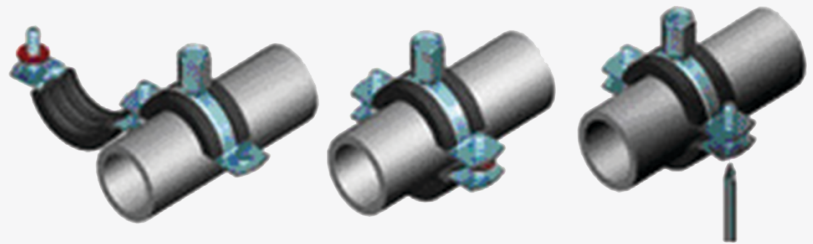
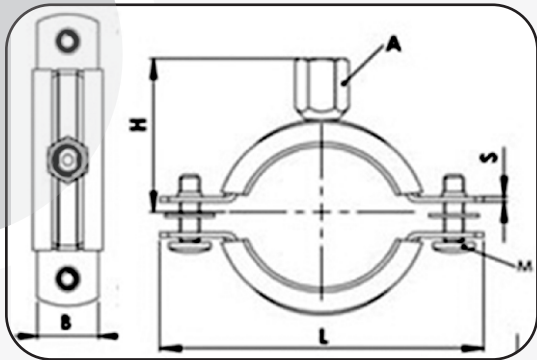
- Used for mounting of pipes to the walls (vertical/horizontal) ceilings and floors
- PPR, PVC, Copper, GI, Stainless Steel Pipes
- Water, Drain, Chiller Plants.

Technical Details & Features:

- Hanging type is M8 / M10 combi nut.
- EPDM lining for:
 - Noise reduction level up to 18 dB according to DIN4109
 - Vibration reduction
 - Partial compensation of thermal expansion
- Easy and safe assembly through Philips combi side screws
- Side screws are protected against loss during assembly with the help of plastic washers.
- Electro galvanized against corrosion protection (Plating thickness 10-12 micron)



Size (Inch)	Breaking Load (KN)	Recommended Load (KN)
3/8" - 1"	4.2	1.5
1 1/4" - 4"	7.3	2.5
4 1/2" - 8"	8	2.8



Code	Size (inch)	Size (mm)	Clamping Range (mm)	L (mm)	H (mm)	M	S X B (mm)	A	Quantity / Box	Weight / Box (Kg)
ZYCD-18	3/8"	16	16-20MM	58.5	26	M5 * 20	1.0*20	M5*20M	220	9.5
ZYCD-22	1/2"	20	20-24MM	62.5	28	M5 * 20	1.0*20	5*20M	200	9.7
ZYCD-28	3/4"	25	25-28MM	68.5	31	M5 * 20	1.0*20	5*20M	200	10.3
ZYCD-35	1"	32	32-36MM	76	34.5	M5 * 20	1.0*20	5*20M	130	7.6
ZYCD-40	1 1/4"	40	38-46MM	91.5	39	M6 * 20	1.2*20	5*20M	220	16.7
ZYCD-48	1 1/2"	48	48-53MM	99	42.5	M6 * 20	1.2*20	5*20M	180	15.1
ZYCD-55	1 3/4"	55	53-58MM	105	45.5	M6 * 20	1.2*20	5*20M	150	14.8
ZYCD-60	2"	60	60-64MM	112	49	M6 * 20	1.2*20	5*20M	150	14.6
ZYCD-70	2 1/4"	70	68-72MM	125	54	M6 * 25	1.5*20	6*20M	125	15
ZYCD-75	2 1/2"	75	75-80MM	134	58	M6 * 25	1.5*20	6*20M	125	15.4
ZYCD-83	2 3/4"	83	81-87MM	141	62	M6 * 25	1.5*20	6*20M	100	13
ZYCD-90	3"	90	87-92MM	146.5	63.5	M6 * 25	1.5*20	6*20M	100	13.2
ZYCD-100	3 1/2"	100	99-105MM	159.5	71.5	M6 * 25	1.5*20	6*20M	75	10.5
ZYCD-110	4"	110	107-115MM	173	77	M6 * 30	1.5*20	6*20M	55	9.1
ZYCD-125	4 1/2"	125	120-128MM	192	86.5	M6 * 30	2*25	6*30M	50	13.1
ZYCD-140	5"	140	135-143MM	199	90	M6 * 30	2*25	6*30M	50	13.8
ZYCD-160	6"	160	159-166MM	227	102.5	M6 * 30	2*25	6*30M	50	14.6
ZYCD-200	8"	200	199-205MM	280.7	130	M6 * 30	2*25	6*30M	40	14

Standard Pipe Clamp

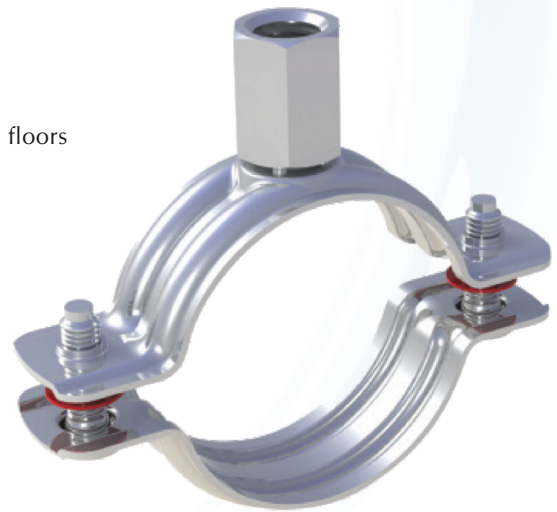
Without Rubber Profile

Application:

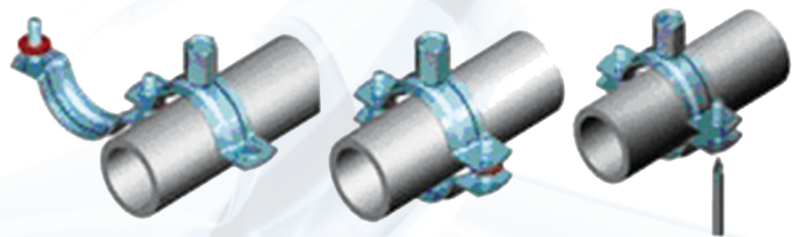
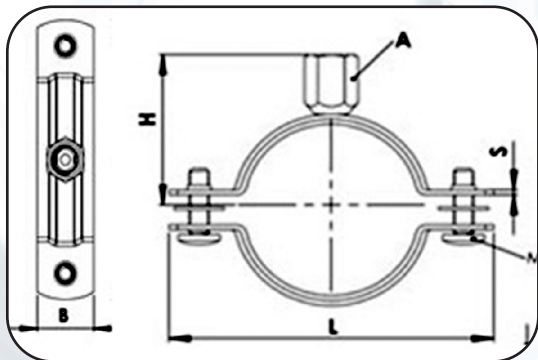
- Used for mounting of pipes to the walls (vertical / horizontal) ceilings and floors
- PPR, PVC, Copper, GI, Stainless Steel Pipes
- Water, Drain, Chiller Plants.

Technical Details & Features:

- Hanging type is M8 / M10 combi nut
- Easy and safe assembly through Philips combi side screws.
- Side screws are protected against loss during assemble with the help of plastic washers.
- Electro galvanized for corrosion resistance (Plating thickness 10-12 micron).



Size (Inch)	Breaking Load (KN)	Recommended Load (KN)
3/8" - 1"	4.2	1.5
1 1/4" - 4"	7.3	2.5
4 1/2" - 8"	8	2.8



Code	Size (inch)	Size (mm)	Clamping Range (mm)	L (mm)	H (mm)	M	S X B (mm)	A	Quantity / Box	Weight / Box (Kg)
ZYCC-18	3/8"	16	16-20MM	58.5	26	M5 * 20	1.0*20	M5*20M	220	9.5
ZYCC-22	1/2"	20	20-24MM	62.5	28	M5 * 20	1.0*20	5*20M	200	9.7
ZYCC-28	3/4"	25	25-28MM	68.5	31	M5 * 20	1.0*20	5*20M	200	10.3
ZYCC-35	1"	32	32-36MM	76	34.5	M5 * 20	1.0*20	5*20M	130	7.6
ZYCC-40	1 1/4"	40	38-46MM	91.5	39	M5 * 20	1.2*20	5*20M	220	16.7
ZYCC-48	1 1/2"	48	48-53MM	99	42.5	M5 * 20	1.2*20	5*20M	180	15.1
ZYCC-55	1 3/4"	55	53-58MM	105	45.5	M5 * 20	1.2*20	5*20M	150	14.8
ZYCF-60	2"	60	60-64MM	112	49	M5 * 20	1.2*20	5*20M	150	14.6
ZYCC-70	2 1/4"	70	68-72MM	125	54	M6 * 20	1.5*20	6*20M	125	15
ZYCC-75	2 1/2"	75	75-80MM	134	58	M6 * 20	1.5*20	6*20M	125	15.4
ZYCC-83	2 3/4"	83	81-87MM	141	62	M6 * 20	1.5*20	6*20M	100	13
ZYCC-90	3"	90	87-92MM	146.5	63.5	M6 * 20	1.5*20	6*20M	100	13.2
ZYCC-100	3 1/2"	100	99-105MM	159.5	71.5	M6 * 20	1.5*20	6*20M	75	10.5
ZYCC-110	4"	110	107-115MM	173	77	M6 * 20	1.5*20	6*20M	55	9.1
ZYCC-125	4 1/2"	125	120-128MM	192	86.5	M6 * 30	2*25	6*30M	50	13.1
ZYCC-140	5"	140	135-143MM	199	90	M6 * 30	2*25	6*30M	50	13.8
ZYCC-160	6"	160	159-166MM	227	102.5	M6 * 30	2*25	6*30M	50	14.6
ZYCC-200	8"	200	199-205MM	280.7	130	M6 * 30	2*25	6*30M	40	14

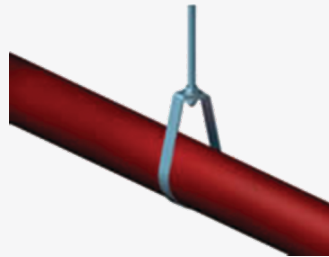
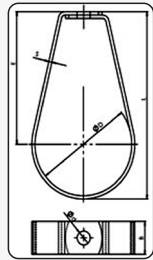
Sprinkler Pipe Clamp

Application:

- Used for freely hanging of horizontal pipelines
- Used for sprinkler system installations
- Used for fire extinguishing systems

Technical Details & Features:

- Height adjustment through threaded rods
- Electro galvanized against corrosion protection (Plating thickness 8 - 10 micron)



Size (Inch)	Recommended Load (KN)
3/4" - 2"	4
2 1/2" - 4"	6.6
5" - 6"	7.8
8" - 10"	12

Code	Size (inch)	E (mm)	Dia - D (mm)	L (mm)	STEEL S*B	Dia - d (mm)	Quantity Per Box	Weight / Box (Kg)
ZYAR-001	3/4"	54.50	30	71	1.5*25	10.50	100	7.2
ZYAR-002	1"	63.50	36	83	1.5*25	10.50	100	10.8
ZYAR-003	1 1/4"	70.50	46	95	1.5*25	10.50	100	11
ZYAR-004	1 1/2"	75.58	52	10	1.5*25	10.50	50	17
ZYAR-005	2"	3.50	66	118	1.5*25	10.50	50	15.5
ZYAR-006	2 1/2"	100.50	78	142	2.5*25	10.50	50	19
ZYAR-007	3"	117.50	92	165	2.5*25	10.50	25	15
ZYAR-008	4"	143.50	115	204	2.5*25	10.50	25	13.5
ZYAR-009	5"	175	142	249	3*25	13	25	15
ZYAR-010	6"	196	170	284	3*25	13	PALLET	-
ZYAR-011	8"	262	222	375	3*40	17	PALLET	-
ZYAR-012	10"	357.50	275	493	3*40	17	PALLET	-

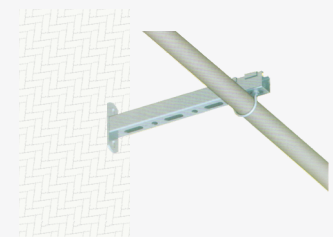
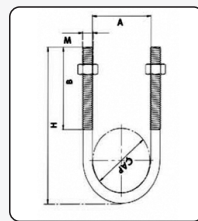
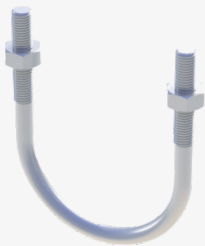
U - Bolt:

Application:

- For direct fixing of pipe clamps to channel systems
- With necessary precautions they can be used either as a fixed or a sliding support

Technical Details & Features:

- Electro galvanized against corrosion protection (Plating thickness 5-8 micron)



Code	Size (inch)	A (mm)	H (mm)	B (mm)	M	Quantity Per Box	Weight / Box (Kg)
ZYBF-001	1/2"	24	50	30	M6	200	7.9
ZYBF-002	3/4"	30	50	30	M6	200	8.3
ZYBF-003	1"	36	70	30	M6	170	8.5
ZYBF-004	1 1/4"	48	80	40	M8	180	11
ZYBF-005	1 1/2"	52	90	50	M8	170	10.6
ZYBF-006	2"	64	100	50	M10	150	10.2
ZYBF-007	2 1/2"	78	120	50	M10	125	15
ZYBF-008	3"	94	140	60	M10	100	13.5
ZYBF-009	3 1/2"	106	150	65	M12	100	14.5
ZYBF-010	4"	118	160	65	M12	55	12.5
ZYBF-011	5"	146	200	65	M12	55	13.6
ZYBF-012	6"	172	220	90	M10	50	15.5
ZYBF-013	8"	224	270	90	M16	40	16

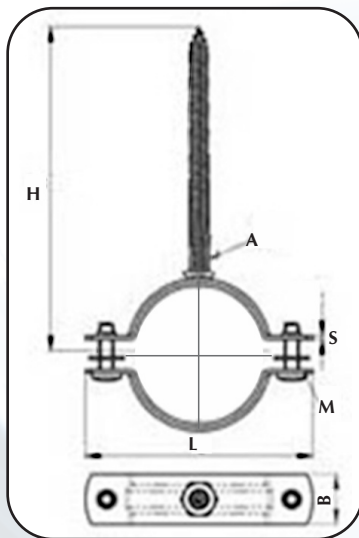
Nail Clamp:

Application:

- Used for mounting of pipes to the walls (vertical / horizontal) ceilings and floors

Technical Details & Features:

- Plastic plug should be used for fixing
- Easy and safe assembly through Philips conbi side screws
- Sides crews are protected against loss during assembly with the help of plastic washers.
- Electro galvanized against corrosion protection (Plating thickness 10-10 micron).



Size (mm)	Breaking Load (KN)	Recommended Load (KN)
1/2"-21/2"	4.2	1.50
3"-8"1	6.8	2.3

Code	Size (inch)	Clamping Range (mm)	L (mm)	H (mm)	STEEL S*B	M	A NAIL	PCS CTN	G.W CTN	CTN MEAS.
44BNR-22	1/2"	20-25	67	86	1.5*20	M6*20	(6*6)*80	220	16	42*27*13
44BNR-28	3/4"	26-30	67.50	89	1.5*20	M6*20	(6*6)*80	200	15	42*27*13
44BNR-35	1"	32-36	75	92	1.5*20	M6*20	(6*6)*80	160	13	42*27*13
44BNR-40	1 1/4"	38-43	83	100.50	1.5*20	M6*20	(6*6)*80	160	13.2	42*27*13
44BNR-48	1 1/2"	47-51	92	102.50	1.5*20	M6*20	(6*6)*80	200	18	42*27*25
44BNR-60	2"	60-64	109	113	1.5*20	M6*20	(6*6)*80	160	17	42*27*25
44BNR-75	2 1/2"	75-80	124.50	122	1.5*20	M6*20	(6*6)*80	140	17	42*27*25
44BNR-83	3"	81-86	126	127	1.8*20	M6*20	(6*6)*80	120	16	42*27*25
44BNR-110	4"	107-112	159	161.50	1.8*20	M6*20	(6*6)*100	80	13	42*27*25
44BNR-160	6"	159-166	215	180	1.8*20	M6*20	(6*6)*100	30	6.4	42*27*25
44BNR-200	8"	199-205	315	200	1.8*20	M6*20	(6*6)*100	25	5.5	42*27*25



HiFIXTM
PIPING SUPPORT EXPERT

CIXI CITY ZHONGYI APPLIANCE INDUSTRY CO.,LTD.

CIXI CITY NINGBO - CHINA